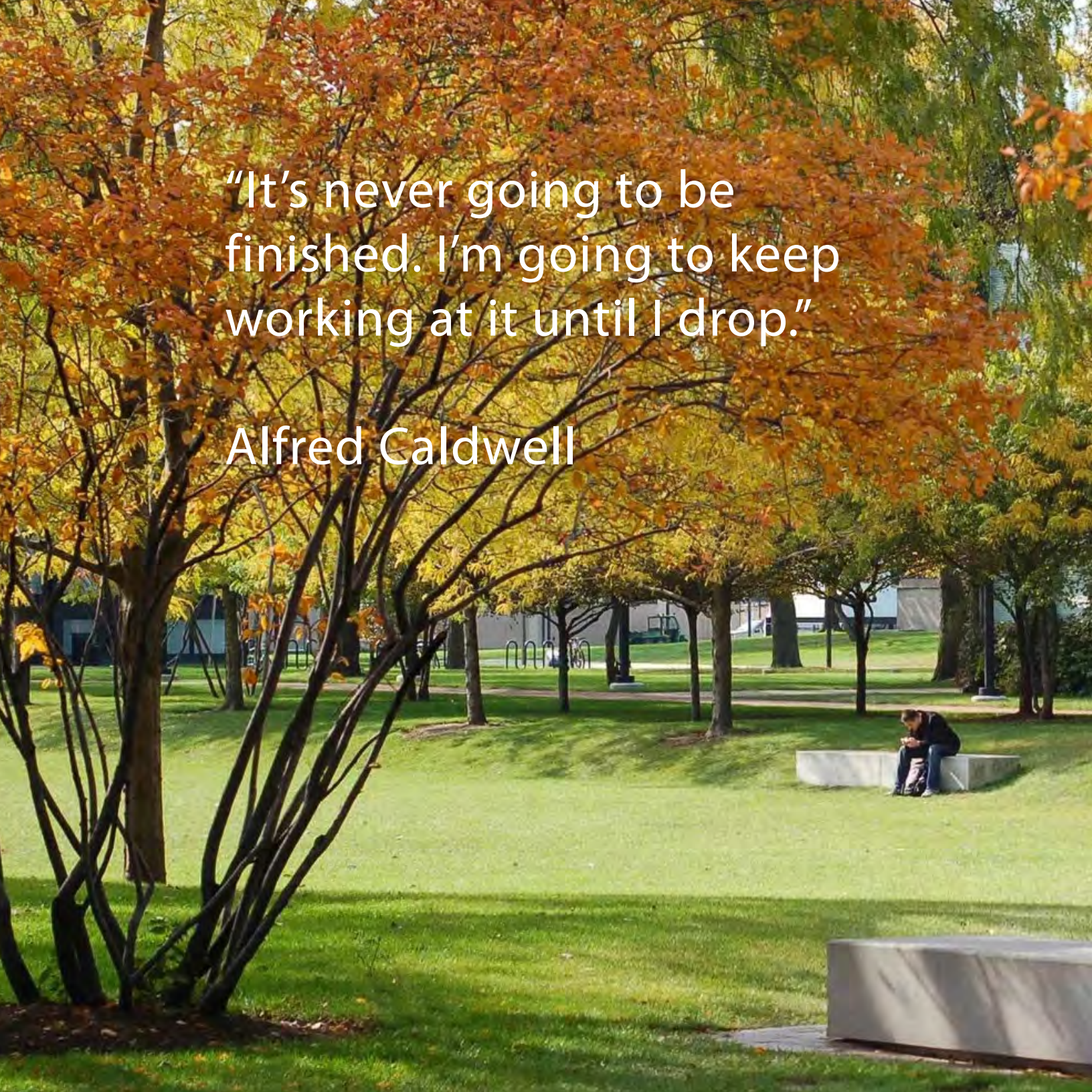




MASTER OF LANDSCAPE ARCHITECTURE + URBANISM

TOWARDS DESIGN JUSTICE

IIT ARCHITECTURE
CHICAGO

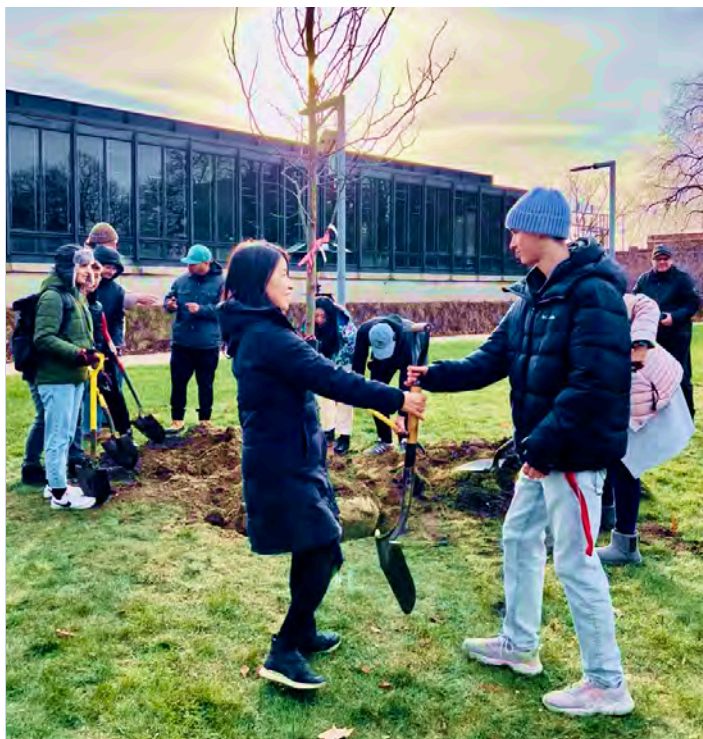
A photograph of a park scene during autumn. In the foreground, a person is sitting on a low, light-colored concrete bench, looking down at something in their hands. The park is filled with trees, many of which have vibrant orange and yellow autumn foliage. The ground is covered in green grass, and the background shows more trees and a clear sky. The overall atmosphere is peaceful and scenic.

"It's never going to be
finished. I'm going to keep
working at it until I drop."

Alfred Caldwell







Master of Landscape Architecture + Urbanism Program
Illinois Institute of Technology
College of Architecture

Layout and production by
Mohammad Arabmazar and
the Landscape Architecture students who provided
images of their work.

Published by the Master of Landscape Architecture + Urbanism Program
Illinois Institute of Technology
College of Architecture
S. R. Crown Hall
3360 South State Street
Chicago, IL 60616-3793
United States
Call +1 312.567.3260
Email: arch@iit.edu
<https://arch.iit.edu/study/mla>

Copyright: 2023
Illinois Institute of Technology
College of Architecture
All rights reserved

Front & back cover image:
Gloria Rivera and Johann Friedl

Photos not credited in this document were taken by IIT faculty or students.

HOW TO APPLY TO MLA+U

The MLA+U Program at IIT offers the Master of Landscape Architecture professional degree, a dual MLA/MARCH, and advanced standing. For detailed information about graduate admission requirements, deadlines, and scholarships, please visit arch.iit.edu/admissions/graduate, call +1 312.567.3260, or email arch@iit.edu

DIRECTOR'S LETTER	8-9
THE GREAT LAKES AND BEYOND	10-11
IIT COLLEGE OF ARCHITECTURE	12
ALPHAWOOD ARBORETUM	14-15
MLA+U TOWARDS DESIGN JUSTICE	18-19
DEGREE PROGRAMS	22
FACULTY LIST	25
COURSEWORK	27
 1ST YEAR FALL	
LA 541 (6 credits) Landscape Architecture Studio I: Processes	28-29
LA 525 (3 credits) Design Media I: Drawing & Modeling the Landscape	30-31
LA 501 (3 credits) History/Theory/Criticism Landscape Architecture Theory	32
LA 565 (3 credits) Ecology & Materials Workshop I: Plants & Planting	32
 1ST YEAR SPRING	
LA 542 (6 credits) Landscape Architecture Studio II: Site & City	34-35
LA 526 (3 credits) Design Media II: Digital Media	36-37
LA 502 (3 credits) History/Theory/Criticism II: Landscape Architectural History	38
LA 566 (3 credits) Ecology & Materials Workshop II: Earthworks & Infrastructures	39
 2ND YEAR FALL	
LA 543 (6 credits) Landscape Architecture Studio III: Comprehensive Landscape Architecture	40-41
LA 545-546 (6 credits) Landscape Architecture Studio V: Metropolis	42-45
LA 567 (3 credits) Ecology & Materials Workshop III: Planting Design and Construction	46-47
LA 504 (3 credits) History/Theory/Criticism III: Landscape Architecture Research Seminar	48
LA 527 (3 credits) Design Media III: Advanced Modeling & Fabrication-Dynamic Processes	48
LA 514 (3 credits) Professional Practice of Landscape Architecture I: Entrepreneurship and Practice	48
LA 516 (3 credits) Professional Practice of Landscape Architecture II: Landscape Architecture and Time	48
(3 credits) Landscape Architecture Elective: Prairie School	50
 2ND YEAR SPRING	
LA 503 (3 credits) History/Theory/ Criticism IV: Advanced Contemporary Theory: Case Studies	50
LA 568 (3 credits) Ecology & Materials Workshop IV: Constructing the Urban Environment	50
(3 credits) Landscape Architecture Elective: SITESCAPES	52-53
 SPECIAL PROJECTS	54-55
ACADEMIC INITIATIVES	56
FACULTY RECOGNITION	58-65
STUDENT AWARDS	66-67

DIRECTOR'S LETTER

The IIT MLA+U and Design Justice is rooted in the landscape's botanical diversity and ecological richness, emphasizing the development of design methodologies that prioritize community participation and empower local organizations. It tackles climate change and advocates for equity, as well as ecological and cultural preservation, while promoting ethical technological advancement worldwide, and wealth generation. We believe in landscape architecture education as a journey toward

environmental and social justice through design, the knowledge of plants, and direct exchanges and experiences with the living world. Our process often lives in under-represented neighborhoods, habitats, and cultures to join ongoing initiatives to imagine and enact collective action.

Through academic learning and practical experience, the program influences a new generation of designers dedicated to fostering equitable landscapes by integrating knowledge of ecology, plants, history,



community participation, and design principles. It addresses climate change by advocating for environmentally responsible design solutions and creating inclusive spaces encouraging civic engagement and diverse perspectives.

The program extends these principles to memory sites and places of commemoration, preserving historical significance while acknowledging diverse narratives. Furthermore, it promotes ethical and inclusive technological advancement, considering the impacts on diverse populations and aiming to benefit everyone. Students develop projects related to equitable wealth generation, advocating for designs and policies that reduce wealth disparities through adaptable public spaces and landscape-

based opportunities. As the sole accredited Landscape Architecture program in Chicago and one of the few in major North American cities, we are uniquely positioned to confront these challenges.

Our LAAB-accredited and STEM-certified program equips students to become technically skilled and intellectually versatile landscape architects who share our ambitious vision for creating positive change in Chicago and globally.

Please join us for this work!

Maria A. Villalobos H.
Associate Professor
and Director



THE GREAT LAKES AND BEYOND

Our program is distinctive, being the sole accredited Landscape Architecture Program in the vibrant city of Chicago, the third largest city in the United States.

Our curriculum is uniquely shaped by this urban context, offering courses that delve into the complex landscape challenges of the twenty-first century. These challenges encompass urban landscape implications related to social and

environmental justice, post-industrial legacies, emerging technologies such as driverless cars, water quality and management, rapid urbanization, plant migration due to climate change, community-led design processes, and creating a dynamic and inclusive public realm. Collaborating closely with our colleagues in the Architecture programs within the IIT College of Architecture, we continue the legacy of design and technology innovation.



In today's world, the demand for informed, innovative, courageous, and critically engaged landscape architects has never been greater. These professionals are the leaders in the reclamation, organization, and understanding of our cities to meet the unique challenges of the 21st century. Chicago offers an ideal setting to explore the potential of urban landscapes, with our primary focus on the urban public realm. Within the Great Lakes Basin, where twenty percent of the world's freshwater supply converges, Chicago is a vital natural resource and an economic catalyst for the mega-region. While Chicago boasts a world-class park system, it transforms contemporary projects and urban policies that signify the emergence of Chicago's 21st-century landscape as a rigorous laboratory for cities. In the vibrant and diverse tapestry of Chicago, a city shaped by its rich racial composition and multicultural

heritage, our Master in Landscape Architecture, Urbanism, and Design Justice holds a profound commitment. We recognize that Chicago residents represent a myriad of backgrounds, cultures, and histories, and it is within this dynamic mosaic that we find our purpose. Our mission extends beyond city limits and reaches out to create bridges with all the cities and landscapes that Chicagoans carry within them.

We aim to transcend geographical borders and unite collectively to foster growth, equity, and justice across diverse communities, embracing a spirit of unity and solidarity. With deep respect for the ancestral legacies and ontologies that enrich our shared human experience, we strive to contribute to create a more compassionate, equitable, and just society where every voice is heard, and every heritage is honored.



IIT COLLEGE OF ARCHITECTURE

The College of Architecture's programs of study emphasize investigations in architectural and landscape architectural design and technology, while expanding the significance of these investigations through a rigorous application of critical thought and intellectual inquiry.

The college draws strength from its unique traditions and circumstances such as its Miesian legacy as a preeminent school of modernism and Alfred Caldwell's historic modern landscapes, its location in Chicago, with its profuse architectural heritage and devotion to enhanced landscapes, and the city's present-day connections to progressively minded, global practitioners. The students, faculty, and alumni foster an academic environment that is intellectually stimulating and professionally challenging, committed to innovation, and international in scope.

Architectural and landscape architectural education at IIT combine top-tier

educators and enhanced educational resources with a setting in an unparalleled urban laboratory and associations with the best practices in the world.

Our commitment encompasses the needs of our south side Chicago neighborhood, our city, and their inhabitants of each. An immediately immersive program of studies intertwines analytical skills, design, technology, and practical knowledge. Our perspective invites collaborations with the programs' allied disciplines and is committed to the highest standards of professional preparation.

Our mission incorporates the values of design excellence and technical expertise, and the advancement of professional practice and educational significance.

Our goal is to graduate highly qualified professionals who are ethical, thoughtful, and informed creators of buildings, landscapes, and related visual and physical environments.

A masterpiece of modernist campus design, the vision for the Illinois Institute of Technology was developed as a collaboration between architect Ludwig Mies van der Rohe and landscape architect Alfred Caldwell.

Together, the two designers fused contemporary thought on architecture with sensibility towards the Midwest landscape vernacular to craft a campus that

“flowed like water around stones”

Phyllis Lambert, *Mies in America*.

ALPHAWOOD ARBORETUM

Illinois Institute of Technology's campus identity owes much to the collaboration of Ludwig Mies van der Rohe and Alfred Caldwell. Caldwell's landscape design of gnarly, irregularly planted honey locusts and hawthorns artfully contrasts Mies' buildings of cubic linearity. The trees influenced a generation of architects, and the honey locust especially became

part of the American modern vocabulary. Later work by Peter Schaudt and Chandra Goldsmith Gray strengthened the open and irregular qualities established by Caldwell. Today, the university is home to nearly 2,000 trees representing more than 70 species—including a strong collection of native trees with pinnate and bipinnate leaves.



This collection is historically and culturally significant, including being specifically mentioned in the university's National Register of Historic Places registration. Highlighting the interdependence of landscape and architecture is even more relevant today. The creation of an arboretum that is specifically designed to enhance the campus' dendrological

resources will protect an important cultural landscape, as well as provide opportunities to extend the university's educational and community outreach agendas.







MASTER OF LANDSCAPE ARCHITECTURE + URBANISM Towards Design Justice

IIT MLA+U moves towards Design Justice and welcomes all to practice skills for tomorrow's equitable, participatory, and prosperous landscapes. The program emphasizes equitable landscapes rooted in ecology, history, and community involvement. It tackles climate change and advocates for equity, as well as ecological and cultural preservation while promoting ethical technological advancement worldwide and wealth generation. The IIT master's degree in landscape architecture is based on the following imperatives:

First, the continued search for design justice in landscape architecture. The program centers on the landscape's biodiversity and ecological richness, emphasizing design methodologies that prioritize community participation and empower local organizations. It influences a new generation of designers dedicated to equitable landscapes by integrating ecology, history, community participation, and design principles. The program addresses climate change, creates

inclusive spaces, preserves historical significance, promotes ethical technological advancement, and advocates for equitable wealth generation through adaptable public spaces and landscapes.

Second, the continuing expansion of metropolitan areas worldwide has created a critical role for landscape in the structuring and transformation of urban environments. The increasing complexity of the territories demands new forms of transdisciplinary thought and design.

Third, the combination of landscape and urbanism over the past decade has proven potent, enabling an expansion of the field in both theory and practice. Thus, we understand that landscape architecture should be a fundamentally forward-looking process through the lens of social and environmental justice. We shall prepare technically skilled, intellectually versatile, and ontologically diverse landscape professionals who share those ambitions.

STUDENT WORK

Drawing on landscape architecture's range of work—from urban gardens to regional planning—our students explore the design of landscape networks for food production, hydrological systems, forest systems, mobility infrastructures, and public recreation.

The work occurs in direct collaboration with community organizations and institutions actively pursuing landscape-centered initiatives on the ground. These landscape reconfigurations will define how we reoccupy territories as productive landscapes for social, cultural, and economic outcomes. Within this broader ecological context, the program places great attention on the experiential aspects of the public realm by focusing on the quality of the urban pedestrian environment. Materiality, scale, human comfort, visual beauty, and cultural relevance are critical factors in the improvement of urban life. The development and integration of ecological beauty

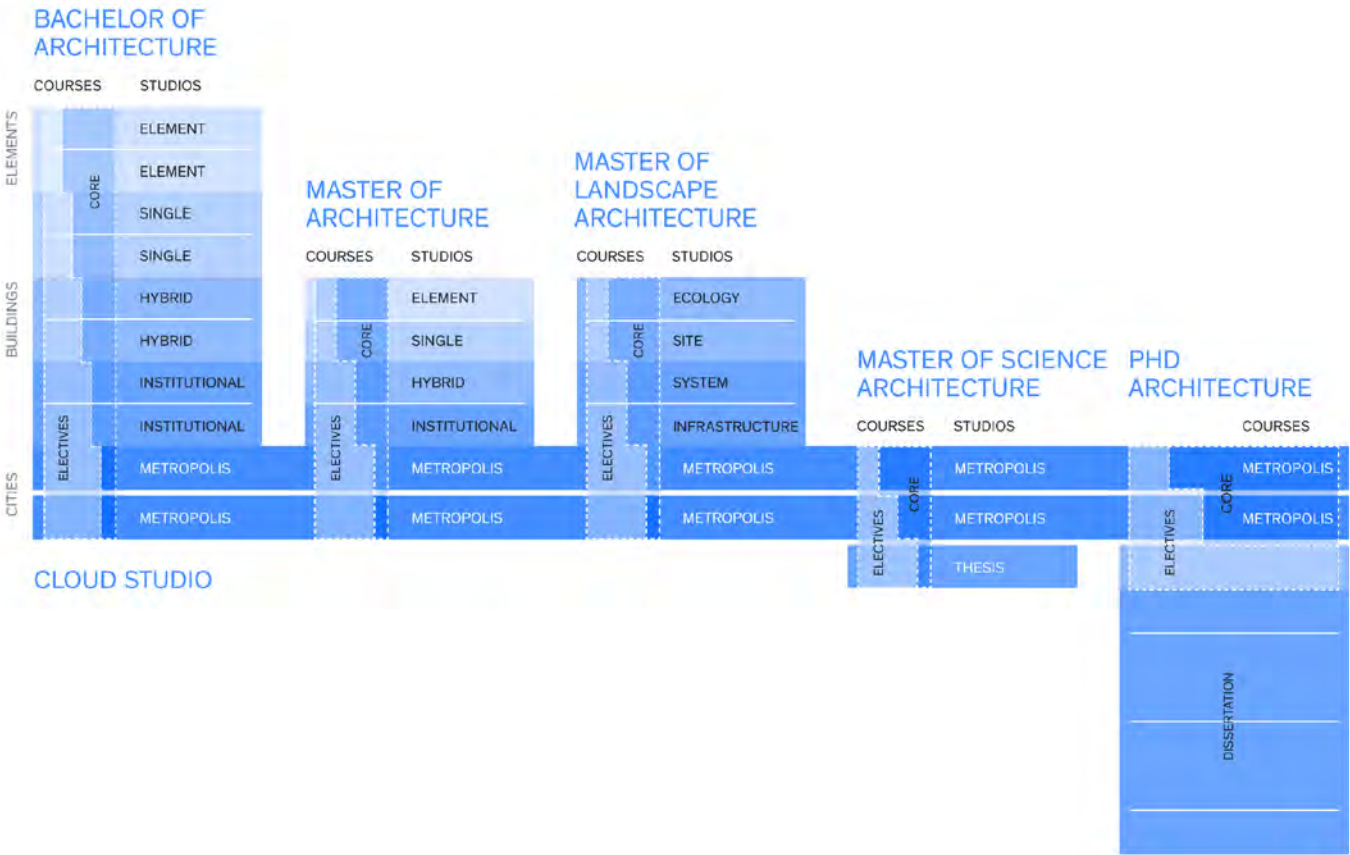
at a range of scales from site to city to region and beyond—are of paramount importance.

Together, the MLA+U community collectively dreams, designs, and roots justice in the living landscapes.





COLLEGE OF ARCHITECTURE CURRICULUM



HOW TO APPLY TO MLA+U

The MLA+U Program at IIT offers the Master of Landscape Architecture professional degree, a dual MLA/MARCH, and advanced standing. For detailed information about graduate admission requirements, deadlines, and scholarships, please visit arch.iit.edu/admissions/graduate, call +1 312.567.3260, or email arch@iit.edu.



S. R. CROWN HALL
RALPH WANGER PORCH

FABRION
REISE
MICHAEL
HANDED
SEPT 16
5 PM

KEEP
SEAT APART
6 FT. FROM
OTHERS
FACE
COVERINGS
REQUIRED

NO
SMOKING
NO
Tobacco
Products
NO
Alcohol
NO
Drugs
NO
Vandalism
NO
Littering
NO
Graffiti
NO
Disrespectful
Behavior
NO
Disrespectful
Language
NO
Disrespectful
Attire
NO
Disrespectful
Actions

SIT WHERE THE LIGHT CORRUPTS YOUR FACE
MIES VAN DER ROHE RETIRES FROM GRACE
AND THE FAIR FABLES FALL



FACULTY	ADVISOR COMMITTEE	ADJUNCT PROFESSOR	
Maria A. Villalobos H. Associate Professor and Director	Gary Hilderbrand Chair of the Department of Landscape Architecture, GSD	Frank Balestri College of DuPage	Sean McKay PORT Urbanism
Ron Henderson Professor and Director of Research for Alphawood Arboretum	Peter Louis Hornbeck Professor in Practice of Landscape Architecture	Aldo G. Burcheri Division 32	Charles Haller Cook County Government
Nilay Mistry Professor in Practice	Chandra Goldsmith Gray College of Architecture Board of Advisors	Sarah Hanson OMNI Workshop	Liwen Kang Illinois Institute of Technology, PhD candidate
Vedran Mimica Professor and Director of M.S	Alicia Bunton Assistant Vice President, Community Affairs	Kelly Murphy MKSK	
Michelangelo Sabatino Professor and Director of PhD	Krista Dawson MLA+U Program Alumni	Jameson Skaife Lamar Johnson Collaborative	
Jonathan Miller Associate Teaching Faculty	L. Anton Seals Jr. Grow Greater Englewood Director	Michael Skowlund OMNI Workshop	
Andy Tinucci Associate Teaching Faculty	Davey Friday MLA+U Program Alumni	Jay Womack Huff & Huff / GZA	
Maurice Cox Visiting Professor	Terry Guen Leaders in Landscape Architecture	Susan Weiler OLIN	
	Mike Gosz Vice President for Data Analytics	Alexis Arias Betancourt SmithGroup	
		Meg Schroeder OMNI Workshop	

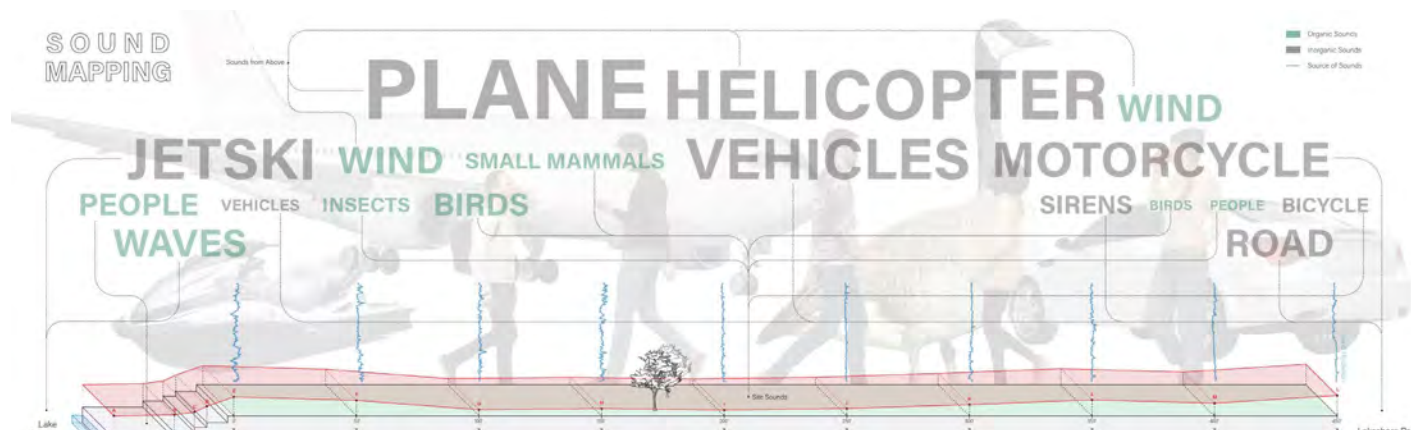
COURSEWORK

LA 541
LANDSCAPE ARCHITECTURE STUDIO I:
PROCESSES

Understanding the fundamental relationships of dynamic processes with an emphasis on representing time, movement, space, light, rhythms, shifting boundaries and enclosures, and physical materials of landscape.

Instructor:
Nilay Mistry

Students:
Johnathan Cienfuegos, below
Juliana Cardozo Chamorro, below
Amanda Soto, opposite below



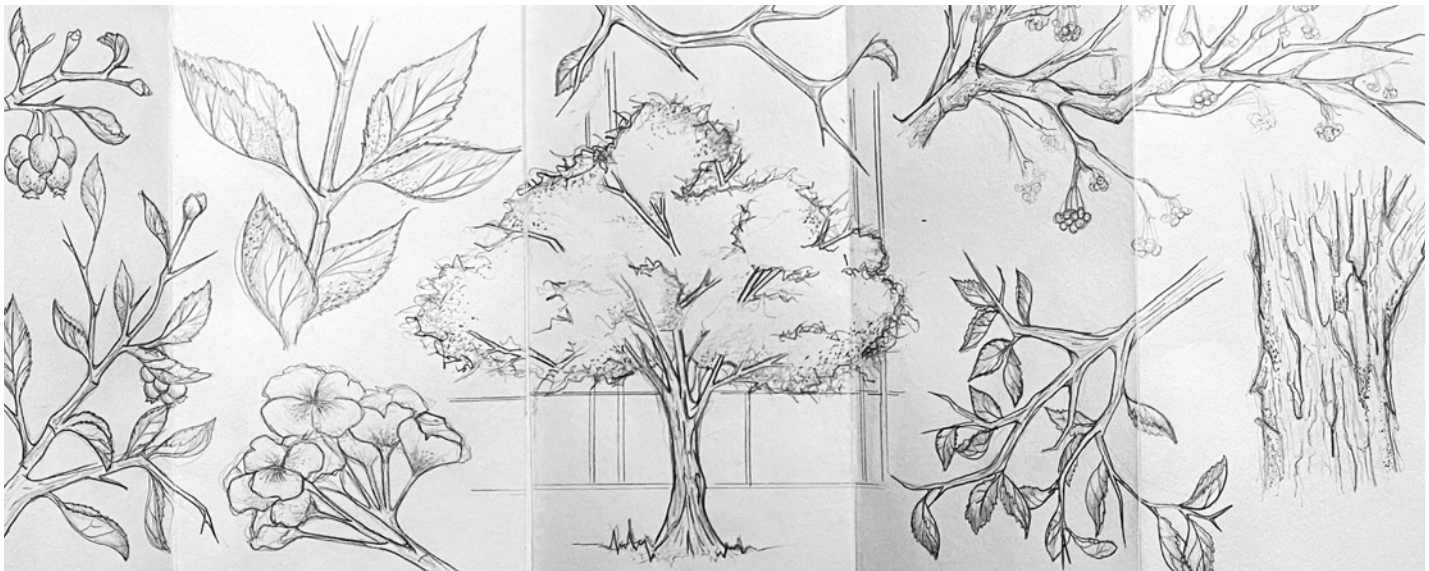
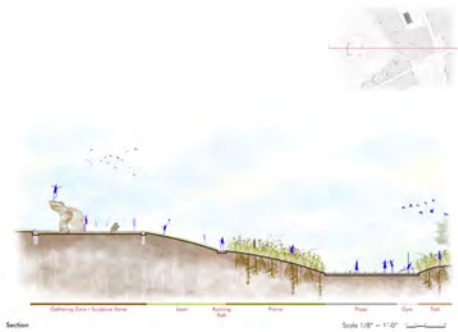


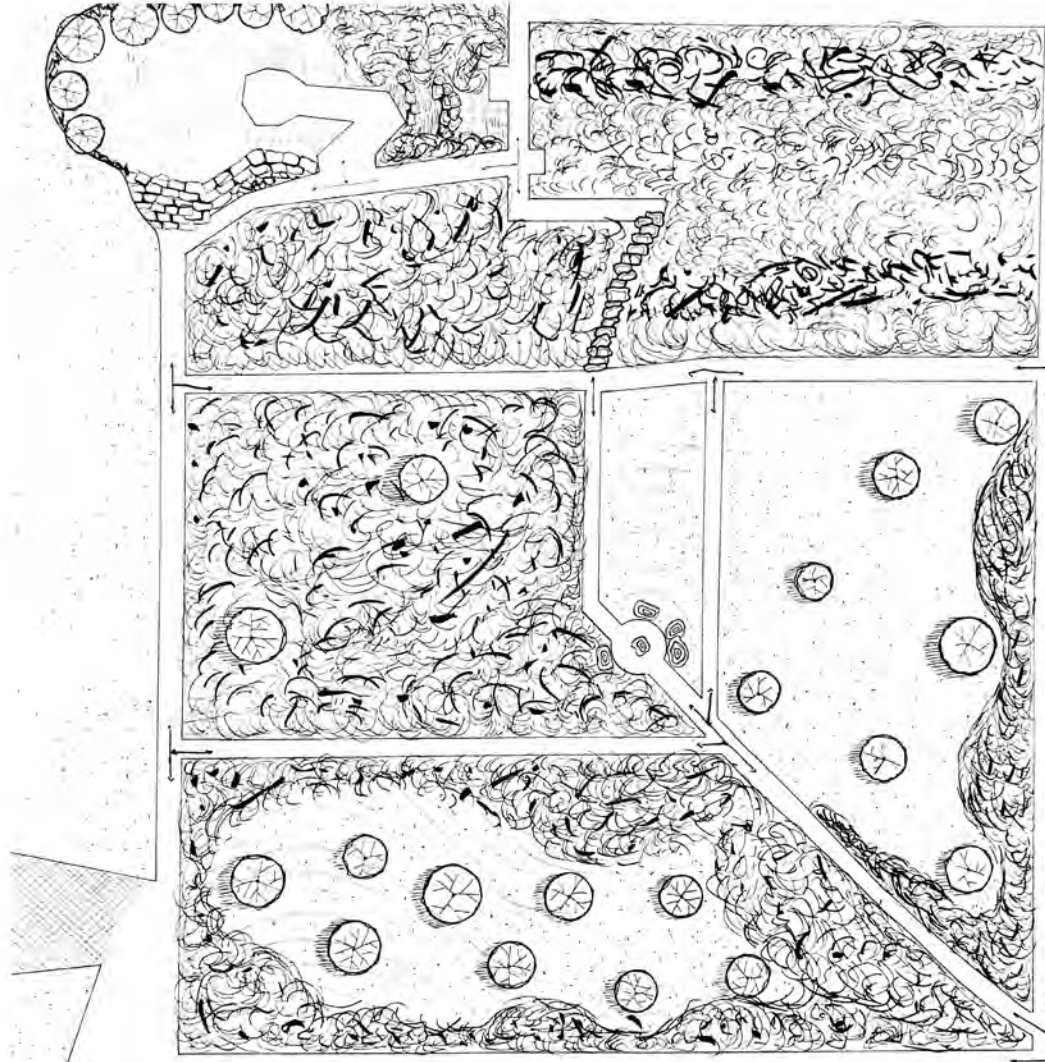
LA 525
DESIGN MEDIA I:
DRAWING & MODELING THE LANDSCAPE

Drawings (manual and digital) and models (physical and digital) will be employed to explore and interrogate landscape processes and envision ideas particular to landscape architecture such as mapping, time, movement, line, contour, texture, and materials, among others, while also developing a mastery of drawing conventions and media.

Instructors:
Kelly Murphy
Jameson Skaife

Students:
Caleb Hadley, below
Juliana Cardozo Chamorro, below
Sergio Sedano, opposite





LA 501
HISTORY/THEORY/CRITICISM I:
LANDSCAPE ARCHITECTURE THEORY

Instructor:
Ron Henderson
Vedran Mimica
Alexis Arias Betancourt

Inquiry into the texts and projects of contemporary landscape architecture situated within a framework of historical and canonical texts and projects.

Let us consider only this question: how does the *locus urbis*, once it has been determined, influence the individual and the collective?

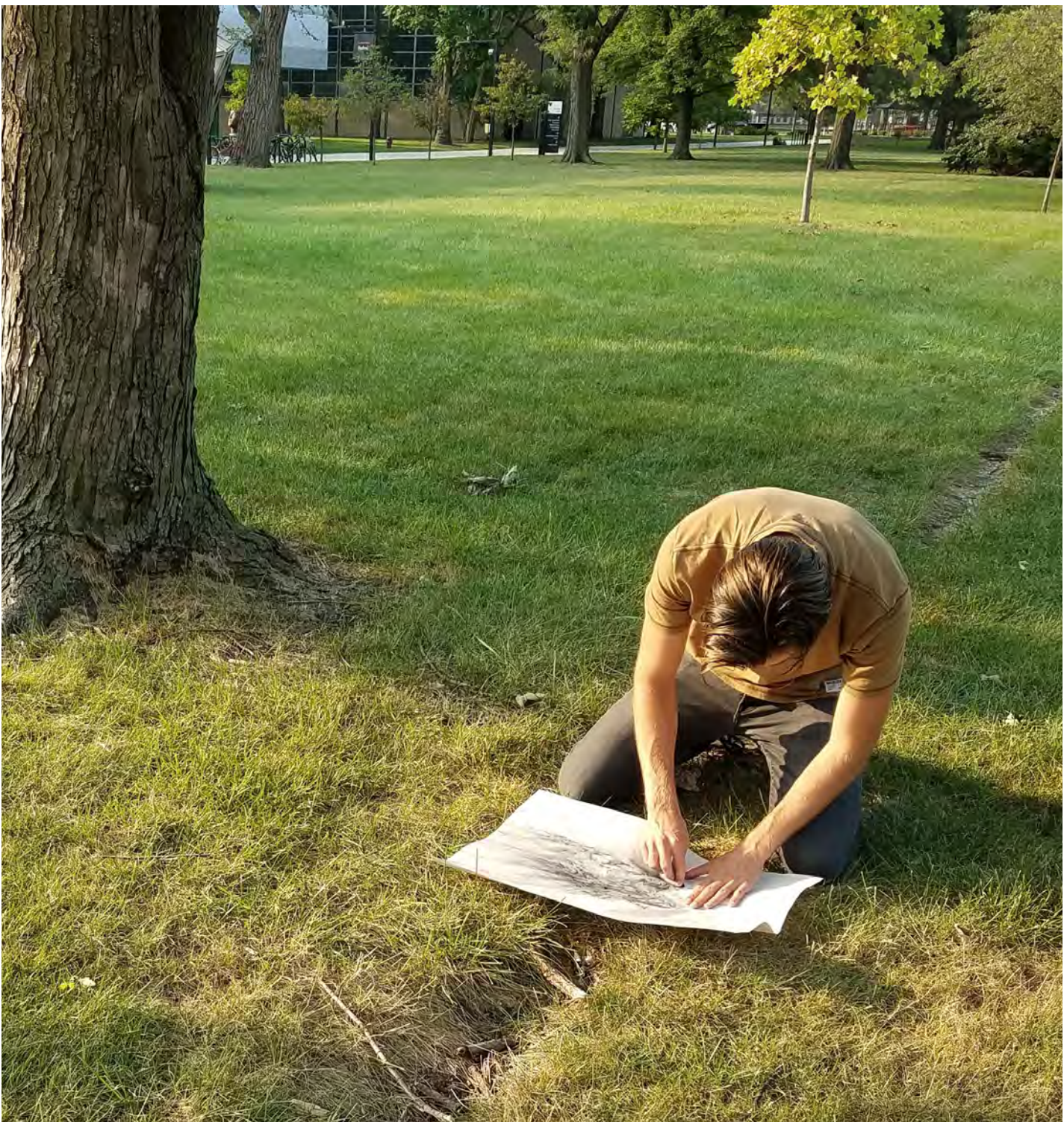
This question interests me here in the ecological sense of Sorre: that is, how does the environment influence the individual and the collective?

For Sorre, this question was far more interesting than the opposite one of how man influences his environment. (Aldo Rossi, in *Idea of the City*)

LA 565
ECOLOGY & MATERIALS WORKSHOP I:
PLANTS & PLANTING

Instructor:
Frank Balestri
Mark Jirik

The plants of the Western Great Lakes Basin, emphasizing both prominent native and commercially available species. Understand and identifying species as found within typical plant communities. Familiarization with plant physiology as determined by climate, geology, topography, hydrology, soils, wildlife, and disturbances.



LA 542
LANDSCAPE ARCHITECTURE STUDIO II:
SITE & CITY

Continued development of the core tools of the discipline of landscape architecture focusing on the 21st century city. Rigorous site analysis will include emphasis on material, cultural, and ecological expression of city-scale networks and flows at the site scale. Design investigations will explore the site itself, its adjacent conditions, and the larger neighborhood or civic milieu.

Instructor:
Nilay Mistry

Students:
Nick Myers, below
Krista Dawson, opposite left
Md. Mahmudur Rahman, opposite above right
Zhicong Fang, opposite bellow left





LA 526
DESIGN MEDIA II:
DIGITAL MEDIA

Using digital tools to clarify, conceptualize, represent, and communicate designed and engineered environments. A fluidity between critical, visual, and quantifiable digital techniques will be cultivated and will ground the management of information across software platforms.

Instructors:
Kelly Murphy
Jameson Skaife

Students:
Sergio Sedano, below
Sergio Sedano, opposite above
Camila Rossi, opposite below





TRAIL

MOUNDS CREATED

WATERFRONT
PATHWAY

LA 502
HISTORY/THEORY/CRITICISM II:
LANDSCAPE ARCHITECTURAL HISTORY

The chronological history of designed landscapes with an emphasis on the emergence of the profession of landscape architecture in North America in the nineteenth and twentieth centuries.

Instructor:
Kristopher Lucius

Lurie Garden, below

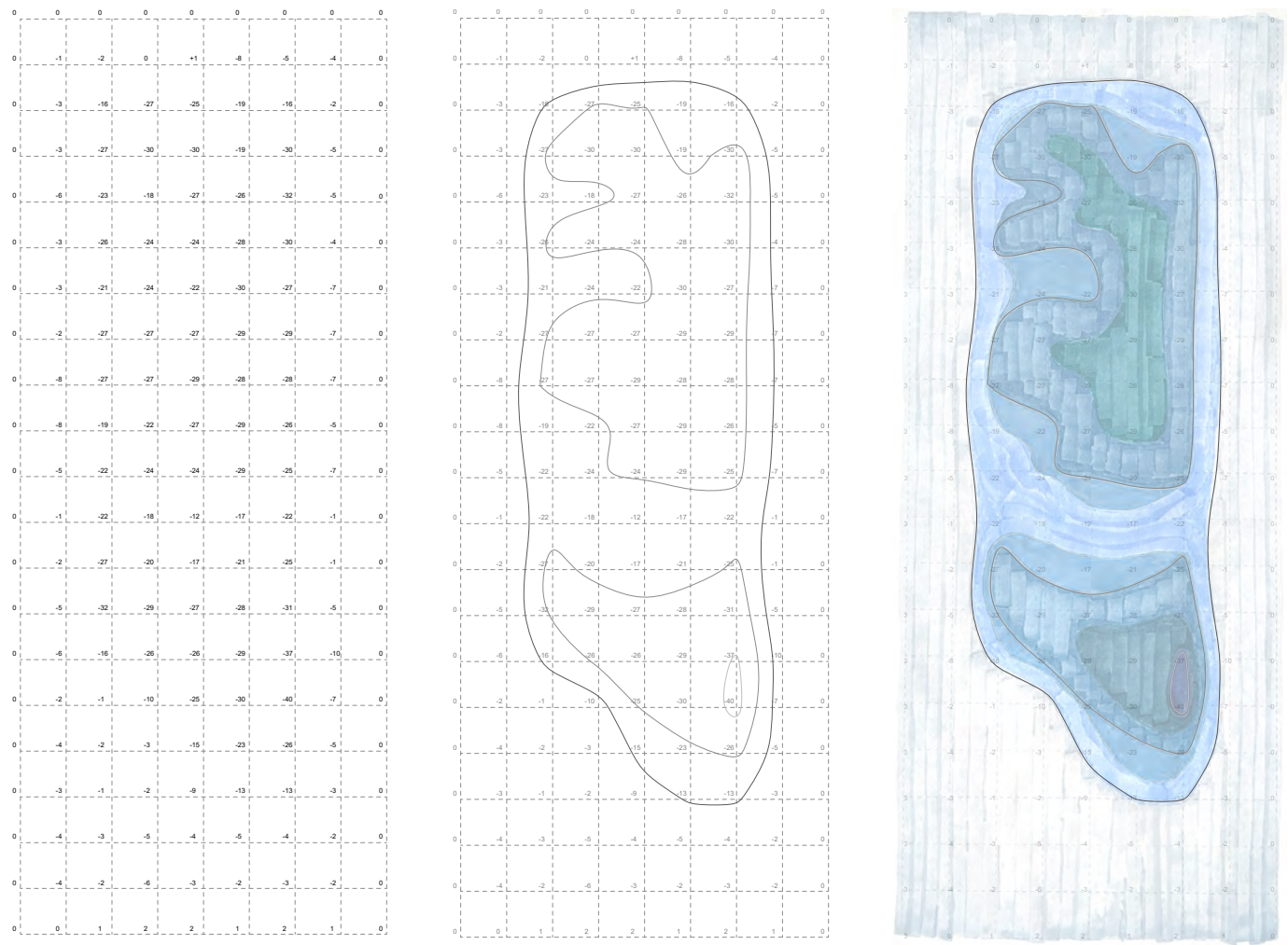


LA 566
ECOLOGY & MATERIALS WORKSHOP II:
EARTHWORKS & INFRASTRUCTURES

The qualities and characteristics of landscape materials with emphasis on a quantitative and interrelated understanding of the design of landform (grading) and water. Covers the influence of climate, geology, soils, hydrology, and disturbances on the design of a site's constituent elements including paths and streets, infrastructure, plants, and water.

Instructor:
Sarah Hanson

Students:
Davis Housman, below



LA 543
 LANDSCAPE ARCHITECTURE STUDIO III:
 ALLREADY THERE
 IN COLLABORATION WITH CHARTIER DALIX
 RESIDENCY AT VILLA ALBERTINE

The integration of local ecologies, projected use, and the performance of ephemeral, semi-permanent, and permanent site interventions into cohesive and resilient design proposals for varied urban sites. Introduction to a wide range of site-specific professional design standards including the Americans with Disabilities Act and barrier-free regulations.

Instructor:
 Ron Henderson

Students:
 Jorge Mayorga, below
 Zhicong Fang and Juliana Cardozo Chamorro,
 opposite above left
 Mohammad Arabmazar, opposite above right
 Jincheng Chen, opposite below





LA 545-546

LANDSCAPE ARCHITECTURE STUDIO V: THE COLLECTIVE STUDIO

Addressing the complexities of the modern metropolis and advance disciplinary knowledge at large, the studio production is oriented toward the development of projects in a variety of scales from large-scale master plans, urban designs, and landscape designs to new urban typologies and singular buildings, all of which can address a variety of the issues pertinent to the modern metropolis. The studios are formed in few thematic clusters which complement each other or serve as dialectical opposites. Each studio explores variety of techniques from parametric design, digital fabrication, model making, and advanced geospatial software to cultural and theoretical discourses.

Instructor:
Maria A. Villalobos

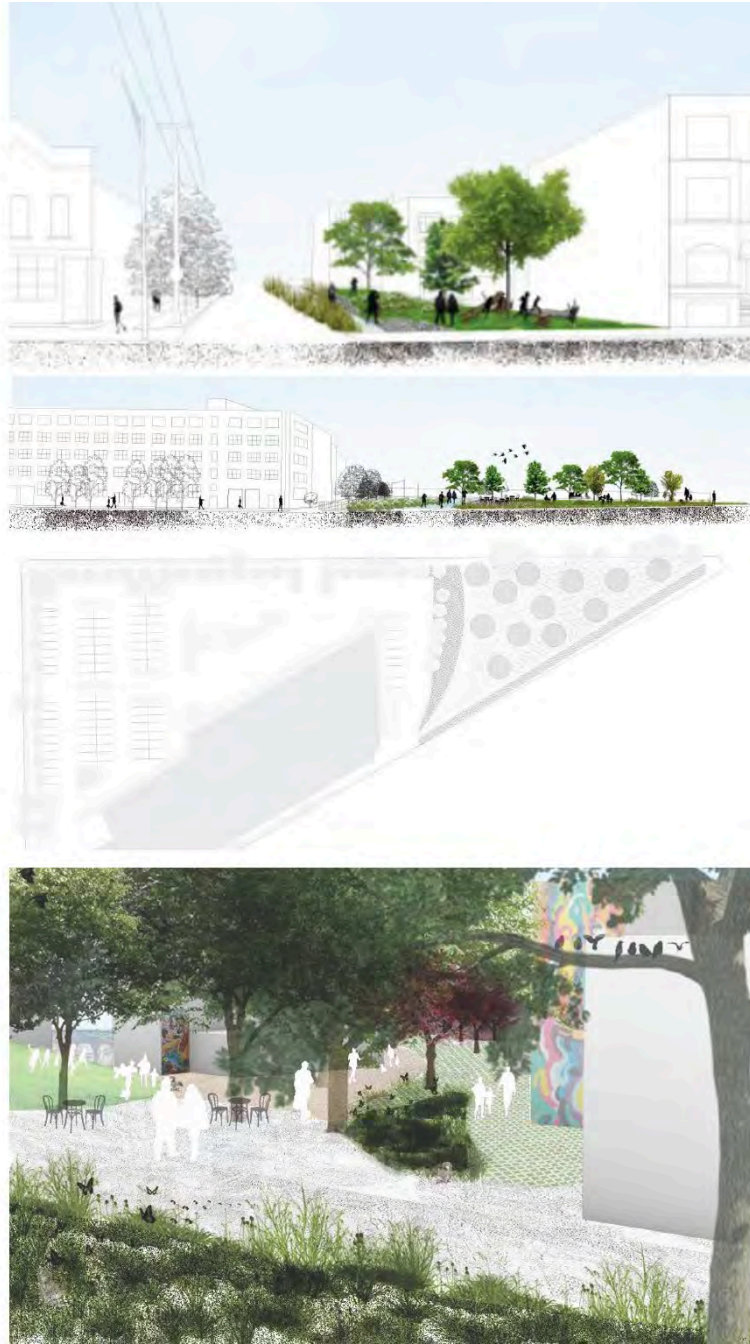
Students:
Juliana Cardozo Chamorro, below
Johann Friedl, opposite





LA 545-546

LANDSCAPE ARCHITECTURE STUDIO V:
THE COLLECTIVE STUDIO (CONTINUED)



George Danforth Traveling Fellowship, 2022. Finalist, Schiff Architecture
Art Institute of Chicago, 2022.

Students:
Pilsen Roots by Jessie Flatley, Sofia Linares, Isabella Holguin



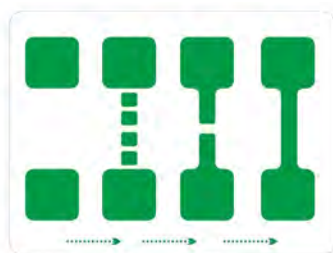
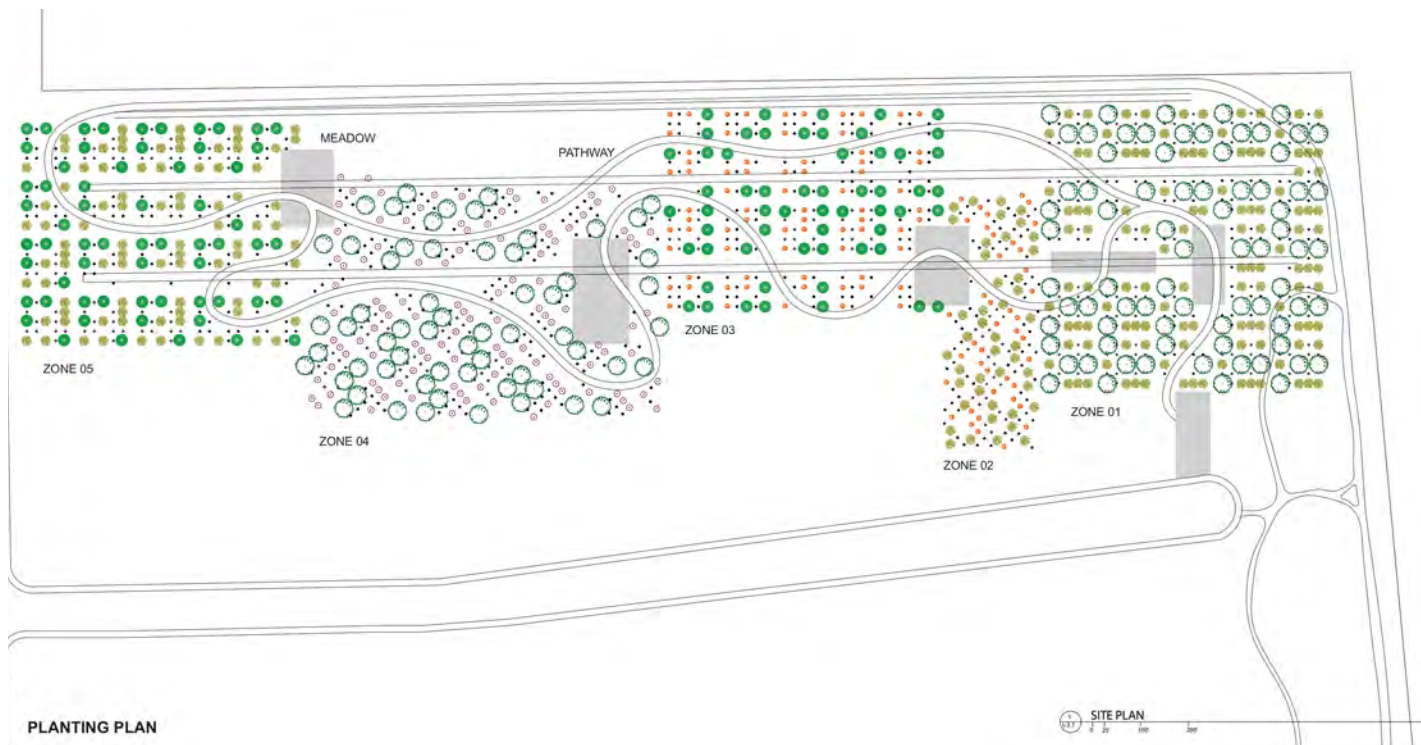
LA 567
ECOLOGY & MATERIALS WORKSHOP III:
PLANTING DESIGN AND CONSTRUCTION

Advanced understanding of planting typologies, the history of plants in design, and the preparation of planting construction documentation augmented by frequent investigations and analysis of built landscapes in the Chicago region.

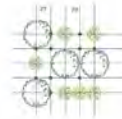
Instructor:
Ron Henderson
Meg Schroeder
Sean McKay

Students:
Md. Mahmudur Rahman





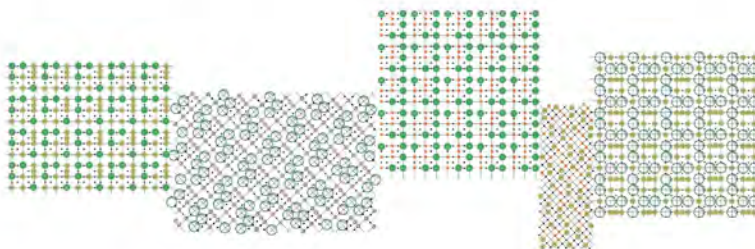
TREE PLANTING STRATEGY



LANDSCAPE PLANNING DIAGRAM



PLANTING CROSS SECTION (NOT IN SCALE)



LA 504
HISTORY/THEORY/CRITICISM III:
LANDSCAPE ARCHITECTURE RESEARCH SEMINAR

Instructor:
Nilay Mistry

History, Theory, and Criticism III is a 3-hour seminar course focusing on the advance study of landscape architecture topics with emphasis on research methods, description, analysis, and criticism. Scholarly expression of analysis and research through writing and graphic production will be required as participants develop forms of data collection and synthesis.

LA 516
PROFESSIONAL PRACTICE OF
LANDSCAPE ARCHITECTURE II:
LANDSCAPE ARCHITECTURE AND TIME

Instructor:
Charles Haller

Investigations of gardens, landscapes, infrastructure, and cities as they are conceived, mature, and change over time. Study of landscapes designed for successional processes, weathering, biological growth and decay, seasonality, preservation and conservation of historic landscapes, and other topics.

LA 527
DESIGN MEDIA III:
ADVANCED MODELING & FABRICATION
- DYNAMIC PROCESSES

Instructor:
Sarah Hanson

Investigate advanced digital fabrication and modeling techniques necessary to understand complex three-dimensional surfaces, objects, and space, as well as dynamic landscape and urban processes. Modeling, rendering, scripting, and animation skills are used to conduct, generate, and communicate research. Beyond the general course description, we will focus specifically on representing the landscape through video/motion techniques. We will use several means of representation from basic time-lapse photography to motion graphics, and clever video in between! We will investigate a particular Chicago landscape throughout the semester as well as tailor additional projects to studio representation needs.

LA 514
PROFESSIONAL PRACTICE OF
LANDSCAPE ARCHITECTURE I:
ENTREPRENEURSHIP AND PRACTICE

Instructor:
Andy Tinucci

Develop expertise in professional practice. Lectures, research assignments, and case studies will investigate practice models, proposals and contracts, schedules and budgets, project phases, project and client types, project team structure, the role of competitions, professional development, and licensure. In addition, the role of landscape architects, urban planners, real estate trusts, government agencies, developers, and others in directing the economic, professional, political, and socio-cultural concerns and responsibilities to initiate and manage landscapes will be investigated.



LA 568
ECOLOGY & MATERIALS WORKSHOP IV:
CONSTRUCTING THE URBAN ENVIRONMENT

Instructor:
Jay Womack

Techniques and technologies to analyze, construct, remediate and/or restore urban sites including those that have been subjected to complex human disturbances such as landfills and brownfields. Includes special needs construction practices such as structured soils, phytoremediation, green roofs, and rooftop gardens.

LA 503
HISTORY/THEORY/ CRITICISM IV:
ADVANCED CONTEMPORARY
THEORY: CASE STUDIES

Instructor:
Michael Skowlund

Twentieth century and contemporary landscape architecture is investigated through case studies including site visits to projects in the Chicago region.

LANDSCAPE ARCHITECTURE ELECTIVE
PRAIRIE SCHOOL

Instructor:
Terry Guen

No region other than the Midwestern United States has had an indigenous style of landscape and architectural design as significant and enduring as the Prairie School. Although relatively short-lived, c. 1900-1915, the Prairie movement continues to influence designers – more than a century later. Beginning with its roots in Asia and Europe, this course provides an overview of the movement's evolution and major designers – including landscape architects Frederick Law Olmsted, O. C. Simonds, Jens Jensen, and architects such as Frank Lloyd Wright, Marion Mahoney Griffin, Walter Burley Griffin and Alfred Caldwell's work.



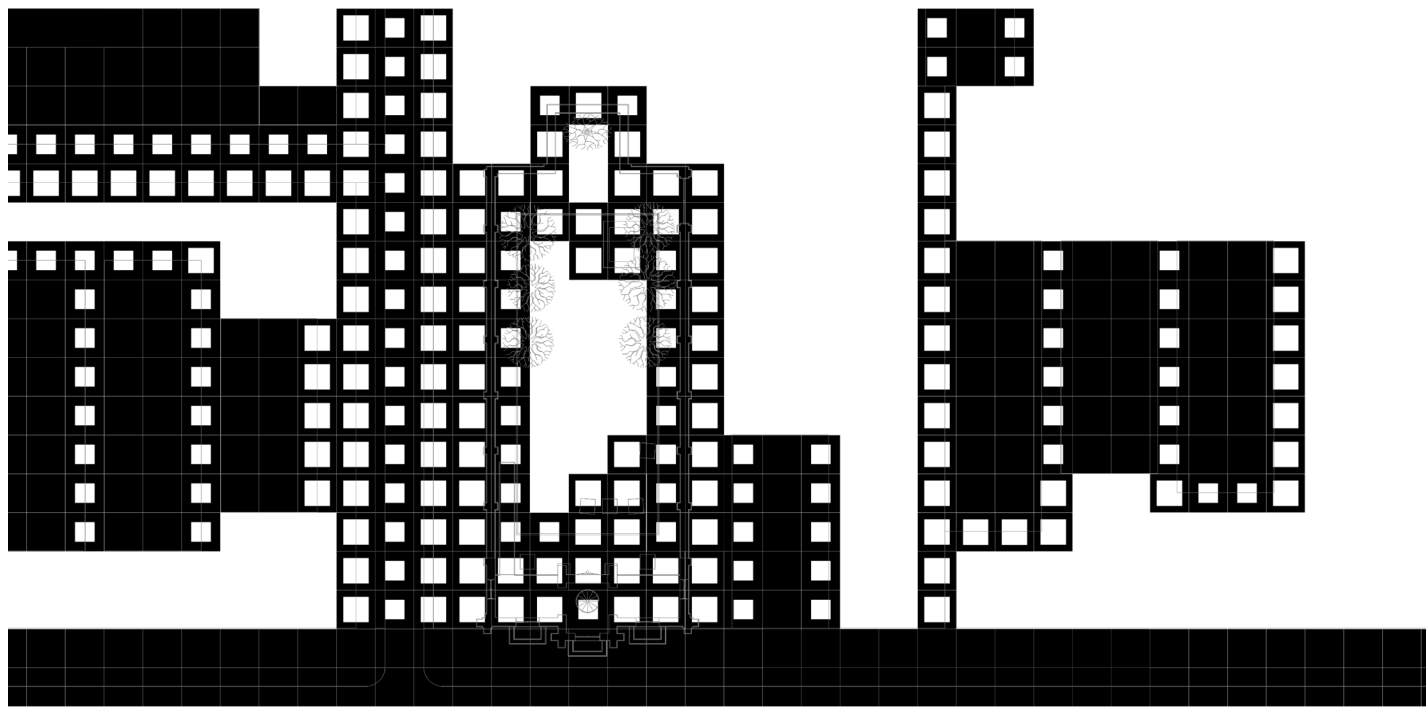
LANDSCAPE ARCHITECTURE ELECTIVE SITESCAPES

This seminar employs comparative studies of other arts, in particular cinema, to illuminate landscape architectural aesthetics and the creative process. It has a dual focus: it undertakes an introduction to film studies through the analysis of films and readings in film theory and aesthetics; at the same time, it will consider architectural concepts and artifacts. The aim is not primarily to study cinema nor to make a definitive conclusion about the congruence or divergence of architecture and cinema. The course intends to cultivate a way of seeing: to illuminate the relations between media, technology, geography, architecture, landscape architecture and ideology.

Instructor:
Jonathan Miller

Students:
Gauri Chalke , below
Julian Go, opposite above
Trae Horne, opposite below





LANDSCAPE ARCHITECTURE ELECTIVE TROPICAL STREETS

Instructor: Maria A. Villalobos H.

The class focuses on drawing vibrant and diverse streets across the largest tropical urban landscapes as part of a journey to articulate their treasures and values. The tropics constitute 40% of the earth's surface area and contain 36% of the earth's landmass. As of 2014, the region was home to 40% of the world's population, and this will reach 50% by the late 2030s.

Through architectural, urban, and landscape drawing, this class will investigate the practical cultural and biological qualities and strategies that characterize the streetscape in the largest tropical metropolitan areas, including Sao

Paulo, Mexico City, Mumbai, Delhi, Kolkata, Rio de Janeiro, Manila, Lagos, Guangzhou, Kinshasa, Shenzhen, Jakarta, Lima, Buenos Aires, Bogota, and Caracas, among others.

Plans, sections, panoramas, perspectives, collages, isometries, cultural, and botanical palimpsests, constructed by the students in virtual field trips and engagements with local practitioners, will aim to reveal much about the texture of the tropical cities, street patterns, construction process over time, use and movement, botanical richness, and hence of their urban landscape life.



Avenida Duarte

ISABELA MARIA DIAZ GABOT



ACADEMIC INITIATIVES

Peter Schaudt Annual Lecture

The 2021-22 Peter Schaudt Lecture was delivered by Betsy Damon, an American ecofeminist artist whose work has been influenced by her activism in women's and environmental rights. The lecture for 2022-23 featured a panel with Sarah White, Kris Sorich, and Matt Callone, titled "New Voices on Landscape Architecture in Chicago."

The Peter Schaudt Lecture invites a landscape architect who has served as an influential mentor of subsequent generations of designers through their professional and academic practices, and has an outstanding reputation working in collaboration with other disciplines. These are characteristics for which Peter Schaudt was widely admired, and it is the mission of the lecture series to celebrate and perpetuate these qualities in the field of landscape architecture.

The lecture series is named in honor of former IIT campus landscape architect, Peter Schaudt, FASLA (1959-2015). With the exception of Mies van der Rohe, no other person has contributed as much to the design of the IIT campus. Schaudt's work also extended beyond IIT, designing works of national and international significance at Peter Lindsay Schaudt Landscape Architecture, and, subsequently, Hoerr Schaudt Landscape Architects. He was a tireless advocate for landscape architects in the city of Chicago and throughout the country.

Alfred Caldwell Annual Lecture

The 2021-22 Alfred Caldwell Lecture was delivered by Ellen Neises, Professor of Landscape Architecture at the Weitzman School of Design at University of Pennsylvania and works on large-scale and large-scope design and policy problems involving land, water and development. The 2022-23 Alfred Caldwell Lecture was delivered by Devon Henry, Franklin Cosey-Gay, and Makeba Kedom DuBose. Devon Henry, CEO and President of Team Henry, has led impactful projects including emergency responses to Hurricanes Irene, Irma, and Sandy, the construction of UVA's Memorial to Enslaved Labor, and the removal of Confederate Statues in Richmond.

This annual lecture is named in honor of Alfred Caldwell (1903-1998), influential landscape architect, IIT alumnus, IIT Hall of Fame awardee, and the first full-time faculty member in IIT's Department of Architecture in the College of Architecture, Planning, and Design.

Caldwell's many contributions to Chicago include the Lincoln Park Lily Pond, Promontory Point, Skyline Park at Lake Point Tower, and the initial landscape architecture expression of IIT defined by Mies van der Rohe as a "campus in a park."

The Alfred Caldwell Lecture invites speakers whose scholarship or creative work frames critical positions on the relationship of humankind and our environment in order to influence the national and international discourse on Landscape Architecture.

The Citizens Annual Lecture

The Citizens Annual Lecture is a distinguished event showcasing the impactful journeys and experiences of accomplished community organizers, practitioners, and government officials in landscape architecture and urbanism worldwide. This annual lecture series provides a platform for fellows actively advancing social and environmental justice within their communities. The lecture focuses on a theme relevant to contemporary landscape architecture and urban development each year.

In 2024, the Citizens Fellowship's emphasis is on best practices in urban eco-districts and agriculture, particularly those emerging in Paris, France, through a collaboration with the French consulate in Chicago. Scheduled for April 5th to 14th, 2024, this journey will bring together 20 participants who will immerse themselves in the innovative developments in urban eco-districts. Upon their return, these participants will deliver the Citizens Annual Lecture, sharing their valuable insights and research projects with their peers. This lecture serves as a platform for knowledge exchange. It fosters an extended collective mentorship and support network, promoting the core values of equity and excellence in landscape architecture and urbanism.





VILLALOBOS - INTANGIBLE HERITAGE



ENGLEWOOD AGRO-ECO DISTRICT

Maria A. Villalobos H.
Associate Professor and Director

Villalobos is an Associate Professor at IIT in Chicago and Director of the Master in Landscape Architecture and Urbanism. She earned her Ph.D. at the esteemed School of Landscape Architecture of Versailles, France, where she delivered a dissertation on the Botanical Garden of Roberto Burle Marx, which explored the creative process for the regeneration of urban landscapes. In recognition of her outstanding achievements, she received the first prize in the Venezuelan Architecture Biennial in 2017 for the Rehabilitation of the Botanical Garden of Maracaibo. In 2017, she made history as the first woman to receive the first prize in the

Venezuelan Architecture Biennale. Villalobos holds a Master in Design Studies from Harvard University Graduate School of Design and was honored with the Annual Award for Excellence in Housing Design in 2004.

Currently, Villalobos is a member of the Committee on Design for the Department of City Planning in Chicago, a Board Member of The National Association of Minority Landscape Architects, and a Core Member of Dark Matter University.

Her expertise and dedication have been recognized with the Council of Educators in Landscape Architecture's 2022 Excellence in Design Studio Teaching Award.

As Co-Founding Artist Creator at Botanical City, Villalobos emphasizes preserving endangered cultural landscapes and overcoming abandonment in cities. Her practice is committed to rooting for justice in the urban landscape. Her projects in Chicago include the Englewood Agro-Eco District and nature trail, and the Brozenville Trail.



NEWPORT SPRING - HENDERSON

30 Trees

And Why Landscape Architects Love Them

Edited by
Ron Henderson

Birkhäuser
Basel

30 TREES BOOK

Ron Henderson
Professor and Director of Research
for Alphawood Arboretum

Ron Henderson is Professor of Landscape Architecture + Urbanism at Illinois Institute of Technology (IIT) in Chicago where he is also the inaugural Director of Research for the Alphawood Arboretum.

His research and teaching is broadly ranging, including the natural history of cities, the spatial and cultural expression of trees as a design medium, equitable access to water and other urban assets (for which he has a National Science Foundation grant), the urban design implications of driverless vehicles (for which he also has a National Science Foundation grant),

and the gardens and urbanism of China and Japan. He is the author of *30 Trees* (Birkhauser, 2023) *The Gardens of Suzhou* (University of Pennsylvania Press, 2012), and numerous essays, articles, and commentary.

He is the founding principal at LIRIO Landscape Architecture where he has led the design of gardens for the Isabella Stewart Gardner Museum (Boston MA, USA), Elizabethan Theater at Chateau d'Hardelot (Condette, France), Qingyuan Roof Gardens at the Chinese Pavilion (Shanghai Expo), Spring Park (Newport RI, USA) and other award-winning cultural and public projects in Asia, Europe, and North America. Henderson is recognized for his drawings and an exhibition of his

sketchbooks from Japan, Sakura Orihon, has been annually installed in the spring at the US National Arboretum (Washington DC, USA) and received a national American Society of Landscape Architects honor award. LIRIO has received global recognition for their work and projects on which LIRIO has participated have planted over 900,000 trees.

He was Senior Fellow of Garden and Landscape Studies at Dumbarton Oaks, a Japan-US Friendship Commission Creative Artist Fellow, a National Park Service Artist-in-Residence, and is a Fellow of the American Society of Landscape Architects.



SCHEMATIC DESIGN FOR LOGAN SQUARE



CHICAGO BIENNALE 2023

Nilay Mistry Professor of Practice

Professor Nilay Mistry, PLA ASLA directed the annual IIT Experience in Landscape Architecture Summer Program (EiLA) which seeks Chicago area high school students to the discipline of landscape architecture within an urban university environment. Career opportunities in design were explored through a series of visits to offices of practicing landscape architects, discussions with professionals of allied fields, and design exercises engaging Chicago's public landscapes.

Ongoing research work on The Driverless City Project by Professor Mistry of other IIT faculty was delivered by him at the Social Justice and Equity in the Engineering of Smart and Connected Cities Workshop at the University of Washington. This event was made possible by NSF funding and

examined strategies around engineering and smart-city technologies that contribute to strengthening resilience of underserved and at-risk communities in cities. His contributions to The Driverless City Project was also presented in lectures at chapter meetings of the Indian Society of Landscape Architects (ISOLA) and an education session at the Annual Meeting of the American Society of Landscape Architects (ASLA). Design studio and seminar courses held at IIT have explored scenarios for public space in Chicago informed by recent developments in autonomous vehicle navigation.

Professor Mistry has served as landscape architect and steering committee member for the Northwest Portage Walking Museum, in collaboration with the Chicago Public Arts Group, American Indian Center, and Portage Park Neighborhood Association. This team is developing

incremental changes along Irving Park Road forming a learning experience that binds the watersheds of the Des Plaines and Chicago Rivers. Working with artist Santiago X, the team is implementing multiple hybrid earthwork mounds and public programs to educate about the rich cultural history of placemaking, intending to activate the human connection to the river and its importance to the narrative of Chicago's cultivation as a city.

Professor Mistry collaborated with Conor O'Shea and Chris Bennett to earn an Honorable Mention for their submission to the 2018 LA+ Journal ICONOCLAST design ideas competition, reconceiving New York's Central Park as a guarded repository of cultural and horticultural assets.

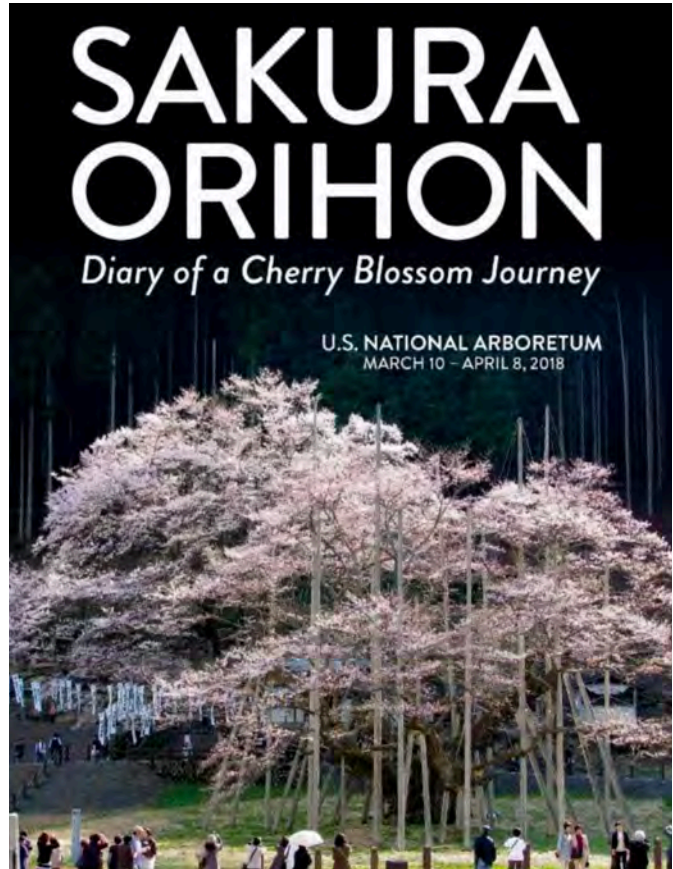


FACULTY RECOGNITION



Maria A. Villalobos H.
Associate Professor and Director

Council of Educators in Landscape Architecture, 2022
Excellence in Architectural Design Studio Teaching Award.
The Collective Studios at IIT



Ron Henderson
Professor and Research Director

American Society of Landscape Architects
2023 National Award of Communication.
Sakura Orihon
United States National Arboretum, Washington, D.C.



Meg Schroeder: Class Work Photo, Kaneville Tree Farms



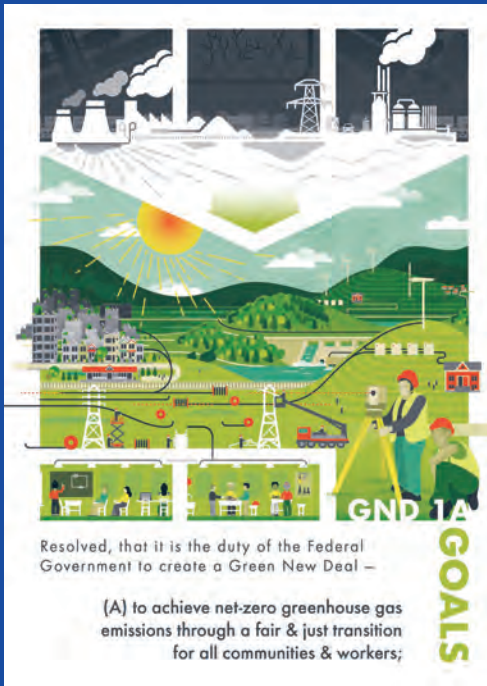
Jameson Skaife: Indianapolis Children's Museum

Professor Jonathan Miller contributed to texts and exhibitions this year including: Panel Member — “Architecture as X” - iitAIAS event - April 2019; Essay — “Get to the Melting Point” — Flat Out Magazine, Issue 3, Fall 2018; Visiting Critic - UIC - Third Year Studio Final Review - Prof. Francesco Marullo - Dec. 2018; Jury Member — Chicago Children's International Film Festival, Montgomery Prize - Oct 2018.

Sarah Hanson is in her third year of teaching as an adjunct professor. Sarah previously worked for Jacobs/Ryan Associates as a landscape designer. Now she is Senior Designer for Omni Workshop, works with artist and architect Amanda Williams for her public projects, and runs the video production studio, Furnace FPS, with her husband, and is incorporating video into the landscape architecture curriculum. Sarah participated as a faculty research fellow in the Landscape Architecture Foundation

2019 Case Study Initiative with MLA graduate student, Matt Callone, to research and produce case studies for three high performing Chicago landscapes- the Chicago Riverwalk, the Argyle Shared Street, and the Chicago Botanic Garden's Regenstein Learning Campus.

Jameson Skaife is an Associate at Lamar Johnson Collaborative, a full-service design firm that harnesses the power of integrated design, including architecture, workplace strategy,



Meg Studer: Green New Deal



Michael Skowlund: McDonald's

FACULTY RECOGNITION CONTINUED

interior design, landscape architecture, urban planning while providing integrated project delivery by leveraging the knowledge and capabilities of our in-house development and construction partners. Jameson helps to deliver residential and commercial amenity decks, corporate campuses and higher education projects. He also spoke at the APA-IL conference on moving historic streetscapes into the future.

Michael Skowlund serves as the director of landscape architecture at Omni Ecosystems and founded the

Omni Workshop, Omni's design studio, in 2016. Michael's office integrates diverse teams focused on solving living infrastructure challenges with landscapes backed by science and systems thinking. The practice employs working landscapes and implements impactful projects to improve public spaces in the urban environment. While Omni's work is measurably changing the Chicago landscape, they are also collaborating and pushing boundaries on projects across the country and internationally.

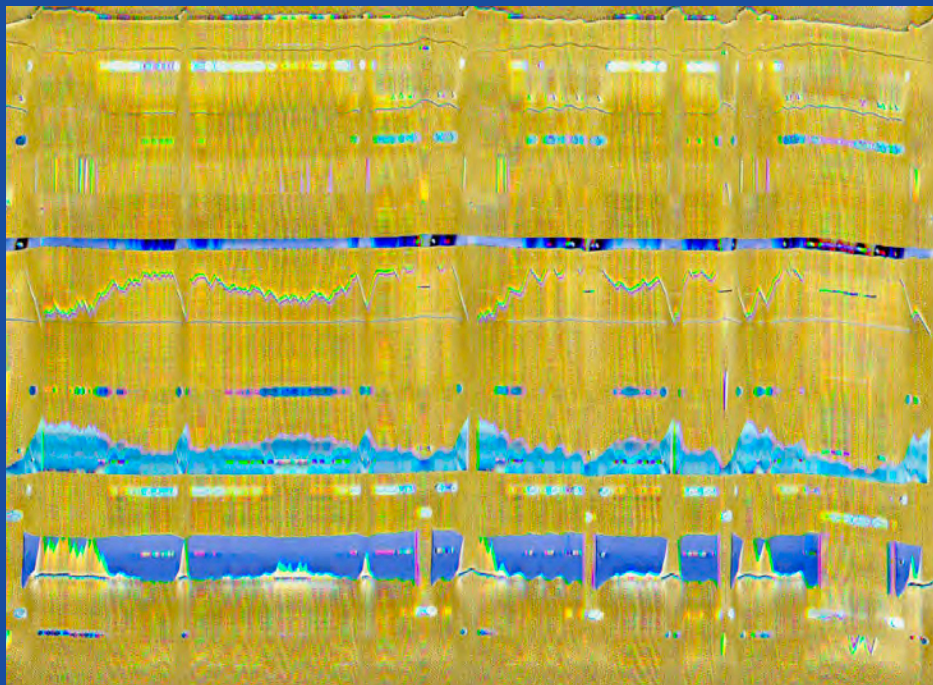
Adjunct professor Jay Womack's innovative and award-winning design solutions are based on an understanding that every site is a

unique and ever-changing part of the global system, which calls for a blending of environmental and economic unity.

At Huff & Huff, his professional office, Jay creates relationships between land, water, people, and the built environment we all live in. He has been recognized by the American Society of Landscape Architects on the national and state levels. He was part of an article in The Guardian - What would an entirely flood-proof city look like? And he is currently working on bringing an initiative called TreeHab USA from Japan to the U.S., a program dedicated to helping kids with disabilities climb trees.



Jay Womack: Lytle Park



Jonathan Miller

FACULTY RECOGNITION CONTINUED

Alexis Arias Betancourt PhD Candidate, completed his M.Arch and M.LA degrees in Architecture and Landscape Architecture at the Illinois Institute of Technology. He serves as a Research Assistant for the "Driverless City Project," an interdisciplinary team funded by the National Science Foundation comprised of roboticists, navigation engineers, and urban designers. His doctoral research centers on examining the challenges of urban navigation for autonomous vehicles on dense urban cores in Chicago and proposes an urban design-based approach to

improving the safety of autonomous vehicle , while leveraging ubiquitous technologies for the creation of healthy, and responsible urban environments.

STUDENT AWARDS

It is an honor to acknowledge the accomplishments of our students who received notable recognition in 2022:

The Illinois Chapter of the American Society of Landscape Architects (Illinois ASLA):
Award of Honor: Erik Schiller
Award of Merit: Jessica Flatley

The Landscape Architecture Foundation's Olmsted Scholar:
Davey (Hines) Friday

The Landscape Architecture Book Award in History, Theory, and Criticism: Erik Schiller

The LIRIO Landscape Architecture Summer Travel Award:
Johann Friedl

Richard H. DrieHaus Foundation Scholarship:
1. Jincheng Chen
2. Nicholas Myers
3. Md. Mahmudur Rahman

The Caldwell Medal:
Juliana Cardozo Chamorro

The Hilberseimer Medal:
Yeliz Otkiran

Edward Lyons Pryce Scholarship:
Maurice Gaston

EDSA Diversity Scholarship:
Jorge Mayorga

The MLA+U Year 1 Faculty Award:
Mohammad Arabmazar

The MLA+U Year 2 Faculty Award:
Krista Dawson



STUDENT AWARDS

It is an honor to acknowledge the accomplishments of our students who received notable recognition in 2023:

The Illinois Chapter of the American Society of Landscape Architects (Illinois ASLA):
Award of Honor: Johann Friedl
Award of Merit: Krista Dawson

The Landscape Architecture Foundation's Olmsted Scholar:
Krista Dawson

The Landscape Architecture Book Award in History, Theory, and Criticism:
Johann Friedl

The LIRIO Landscape Architecture Summer Travel Award: Brendan Tyler Hall

Richard H. Driehaus Foundation Scholarship:
1. Juliana Cardozo Chamorro
2. Maurice Gaston
3. Jonathan Cienfuegos

The Caldwell Medal:
Amanda Soto

The Hilberseimer Medal:
Nick Myers

The MLA+U Year 1 Faculty Award:
Huanyu Wang
The MLA+U Year 2 Faculty Award:
Nick Myers

Justice, Equity, Diversity and Inclusion Scholarship from SmithGroup:
Juliana Cardozo Chamorro

SWA Summer Internship Program:
Mohammad Arabmazar

Maurice Gaston was named a finalist for the inaugural Landscape Architecture Foundation Ignite! Program.

Garden Club of America Hope Goddard Iselin Fellowship in Public Horticulture:
Johann Friedl

Cite/City Internship at Chartier Dalix through Villa Albertine and the French Consulate of Chicago:
Brendan Tyler Hall













MOLD-RESISTANT FIRECODE®